

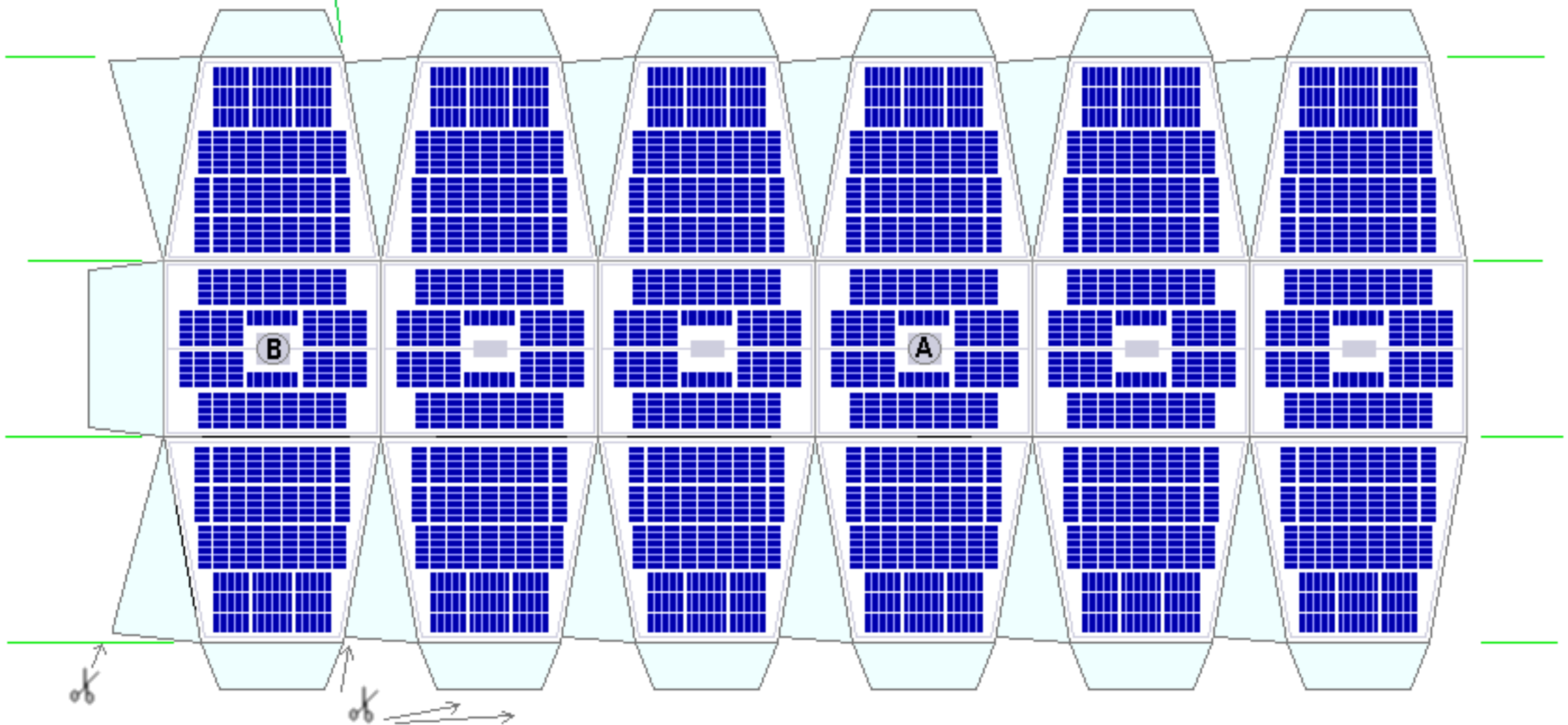
Alouette 1

Canada's first satellite, launched september 1962, to study the ionosphere.



cut here, and all other identical lines (see instructions)

Part A1



Paper model and model design by E. te Groen, member of Public Observatory Philippus Lansbergen, the Netherlands.

Do not copy. For personal use only.

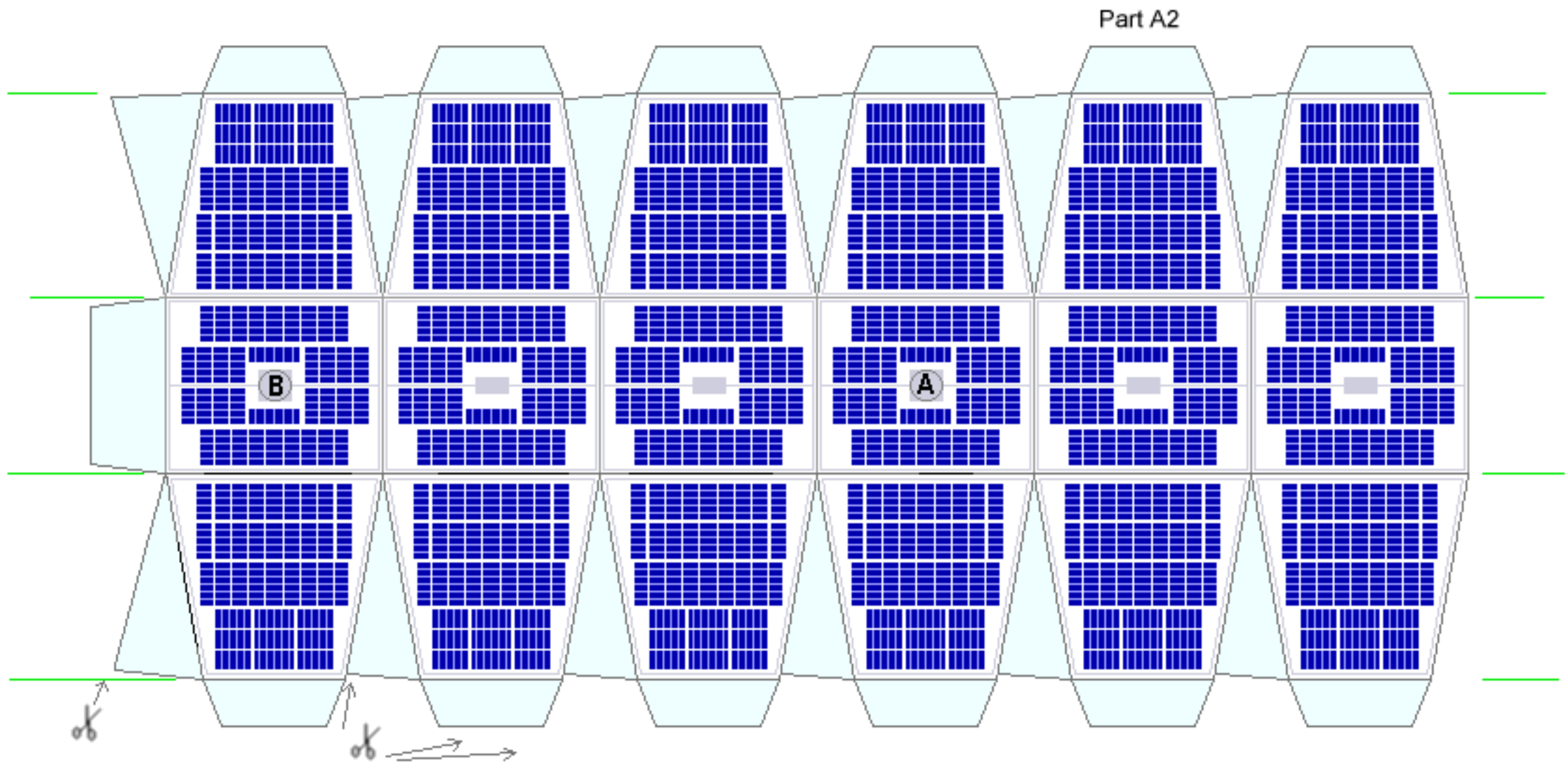
(c) 2002 .

www.lansbergen.net

page 1/5

Alouette 1

Canada's first satellite, launched september 1962, to study the ionosphere.



Paper model and model design by E. te Groen, member of Public Observatory Philippus Lansbergen, the Netherlands.

Do not copy. For personal use only.

(c) 2002 .

www.lansbergen.net

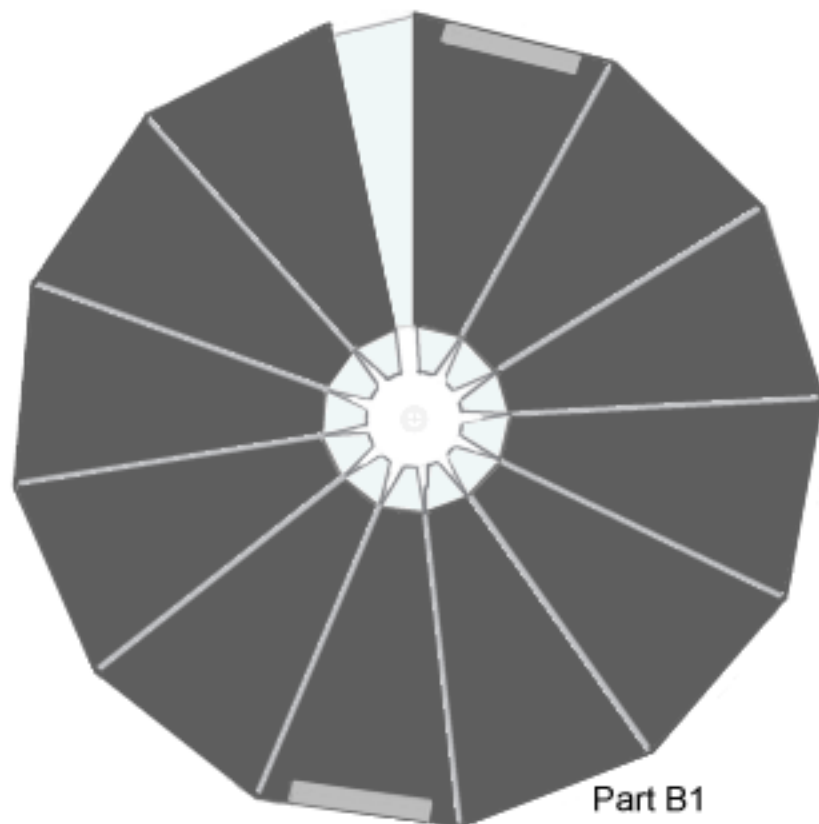
page 2/5

Alouette 1

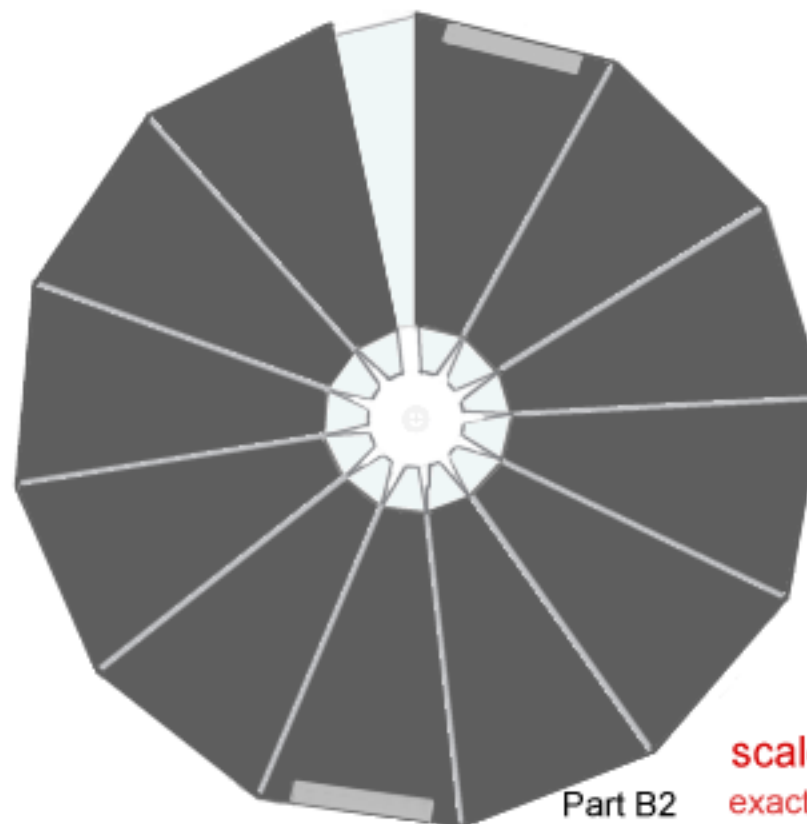
Canada's first satellite, launched september 1962, to study the ionosphere.



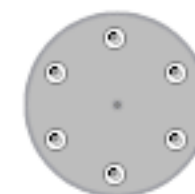
page 3/5



Part B1



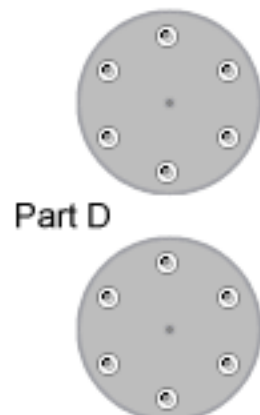
Part B2



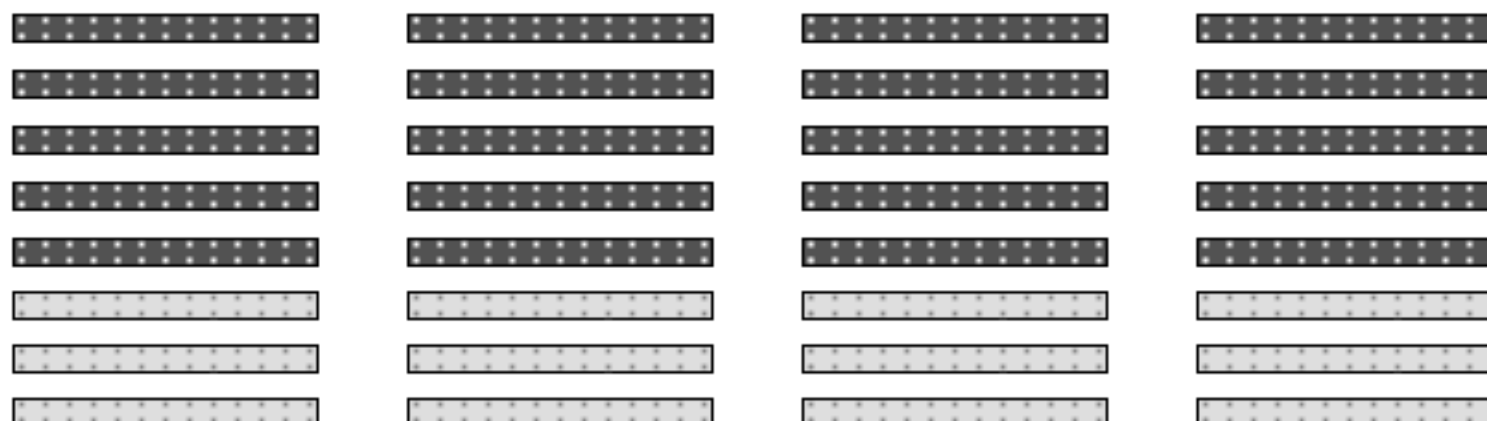
Part D

spare

scale approx. 1 : 6
exact dimensions unknown



Part D



Cut out 16 dark and
8 light strips.
Others are spare
ones.

Parts Cblack and Cgrey

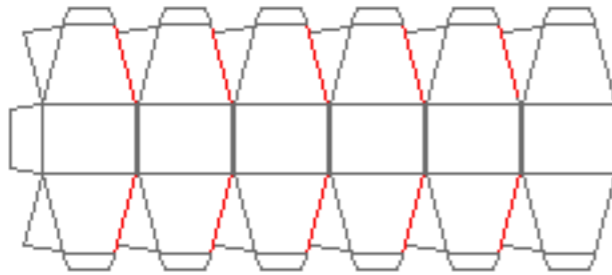
Paper model and model design by E. te Groen, member of Public Observatory Philippus Lansbergen, the Netherlands.

Do not copy. For personal use only.

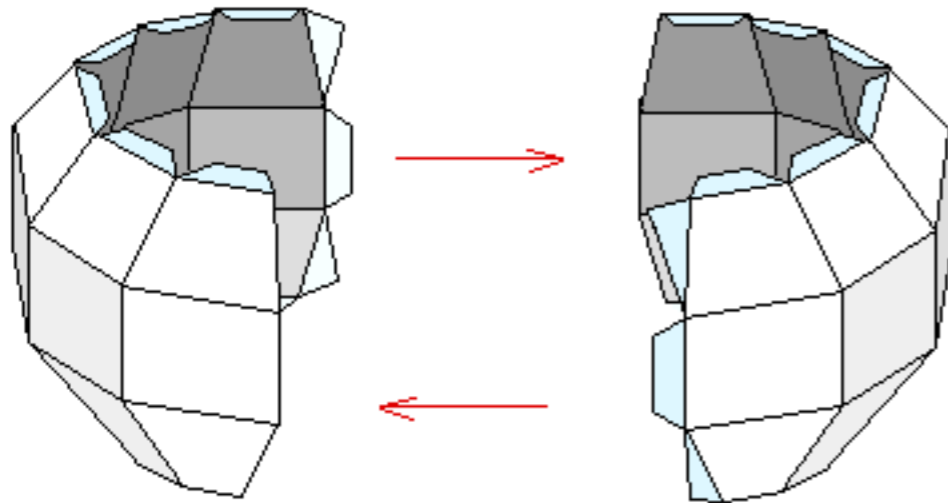
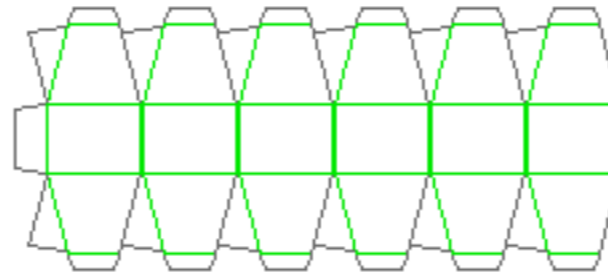
(c) 2002 .

www.lansbergen.net

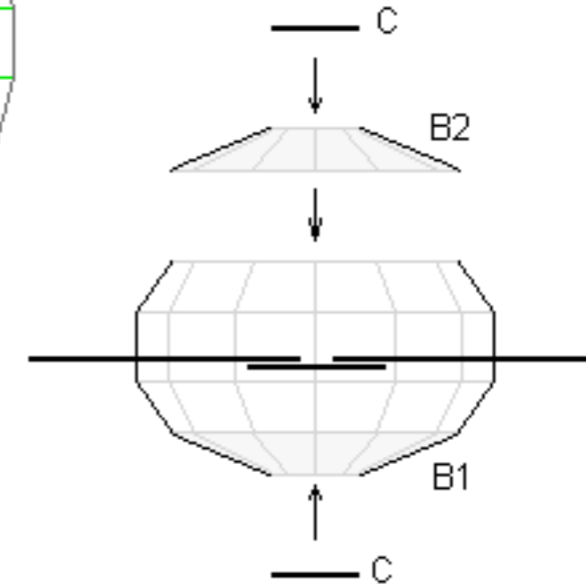
Red lines : cut here



Green lines : score and fold here.



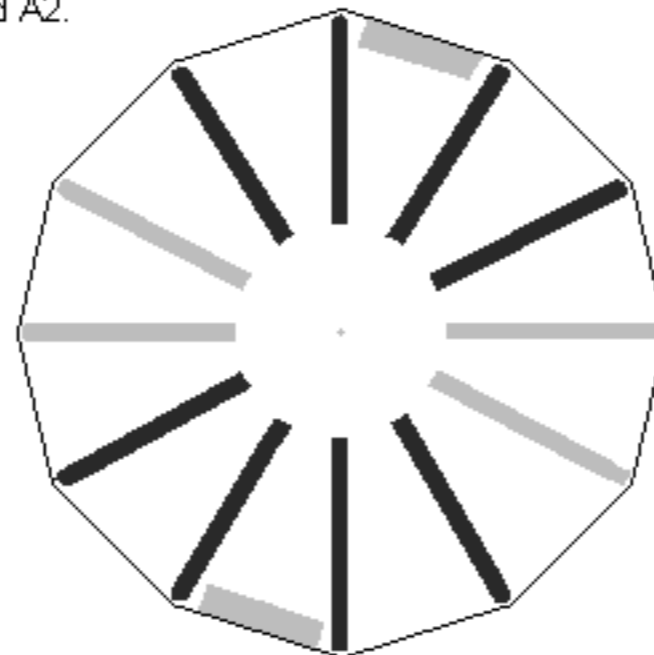
Assemble and connect parts A1 and A2.



First, glue antenna's, then parts B, C and D.

Cut antenna's to length and glue inside of model on a piece of cardboard. Wait until glue has dried before adding the next parts.

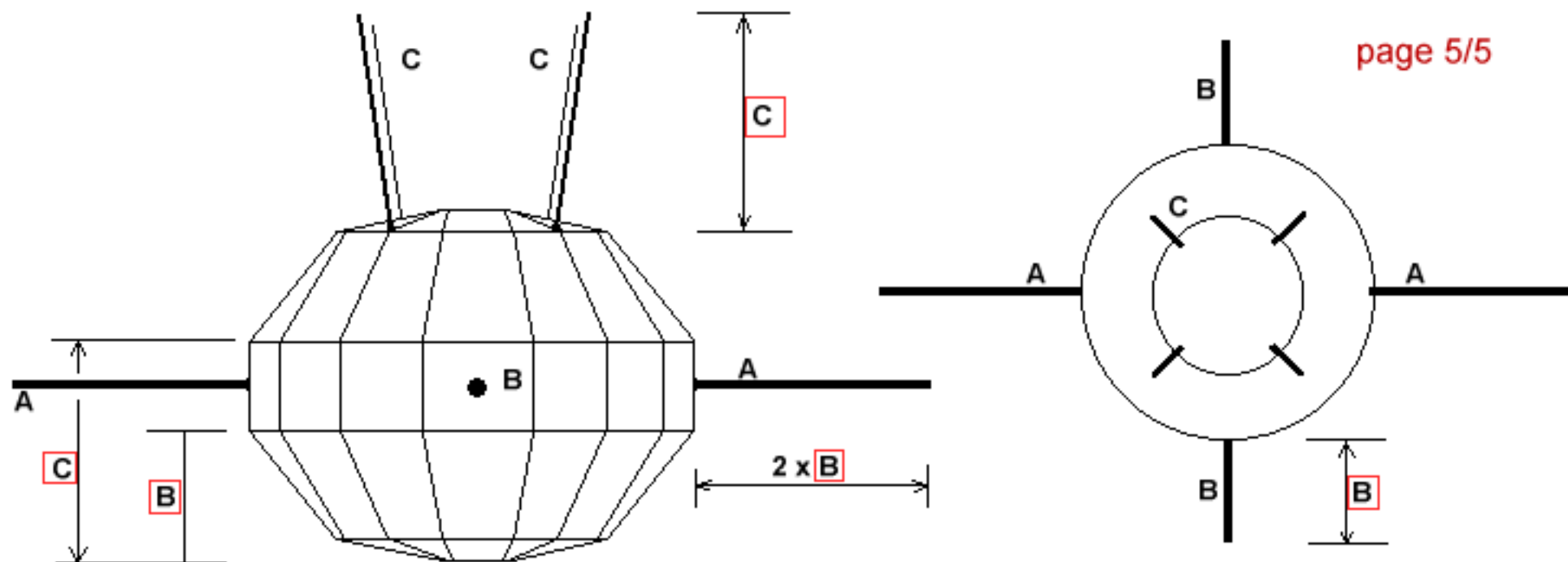
Once dry, add part B2, and Part C (2 times).



The last parts to be added : Part D

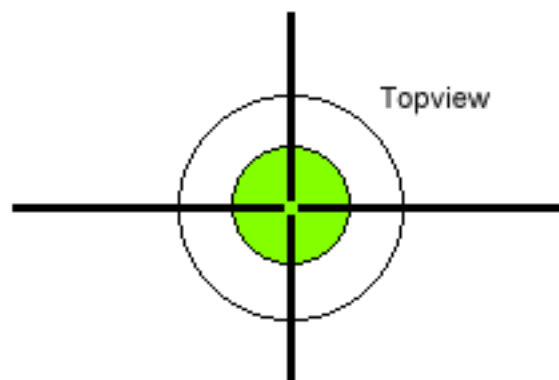
Note the placement for Dblack and Dgrey.

Drawings are not to scale. Lengths are approximate. Use satellites' body for measure, once printed.



page 5/5

Antennas are round and smooth, color: gun metal (like Tamiya's X10)



Do not cross antenna's (thin wooden or bamboo rod),
but centre and firmly glue on large piece of cardboard (green).
Glue dark grey top and bottom last.

Alouette 1

Canada's first satellite, launched september 1962, to study the ionosphere.

