

Sun



Prominence



Base



Miniature book

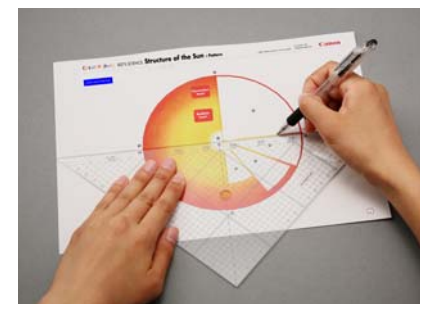


Structure of the Sun

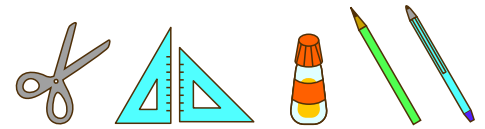
The Sun was born about 4.6 billion years ago, and has been shining over and nurturing us and all lives on the earth. The major difference in the structure between the Sun and the Earth or the moon is that it is entirely composed of high temperature gases. The Sun is structured with roughly three layers of the core, radiate layer and convection layer, and among these three layers, the core, in particular, has the highest temperature and density, and generates the sources of light and heat by nuclear fusion. This generated energy fills the radiate layer and it is carried to the surface (photosphere) by actions in the convection layer. Actually, however, it takes hundreds of thousand years before the energy generated in the core reaches the surface of the Sun, and the energy travels the distance between the Sun and the Earth around 150 million km to reach us.

Assembly tip

- Writing the number of each section on its back side before cutting out the sections is highly recommended. (* This way, you can be sure which section is which even after cutting out the sections.)
- Fold and crease mountain folds and valley folds before applying glue.
- Take your time to cut out each piece carefully.
- Trace along the folds with a ruler and an exhausted pen (no ink) to get a sharper, easier fold.
- When applying glue to large areas, take care to prevent warping of paper that may be caused by over-application of glue. Apply small amounts of glue around the peripheral of the piece or use dual-sided tape to minimize warping.



Necessary utensils



scissors, set square, glue, pencil, used ballpoint pen

Caution

- Please read the Assembly Instructions carefully, and assemble in order as shown on the pattern sheets.
- This papercraft involves using glue, scissors, and other utensils and materials that may be dangerous to young children. Please work somewhere out of reach of young children.

Notation Key

	----- Mountain fold (dotted line)
	----- Valley fold (dashed and dotted line)
	----- Scissors line (solid line)
	----- Guidelines (dotted lines) Align these guidelines when gluing pieces together.
	➔ Arrow indicates position for gluing or insertion.
	● Glue spot (Red dot)
	● Glue reverse side (Green dot)

Assembly Instructions

Four A4 sheets (No. 1 to No. 4)

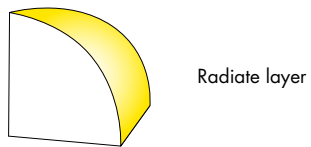
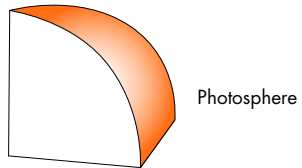
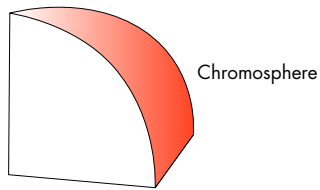
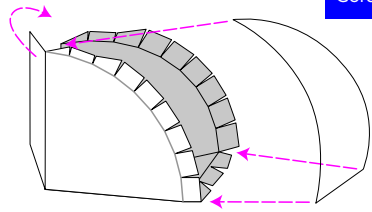
* The following are used in the assembly instructions.

Indicates reverse side of paper.

Prepare materials. Cut out the parts and make mountain folds and valley folds as indicated.

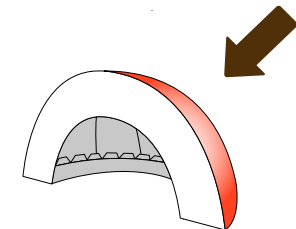
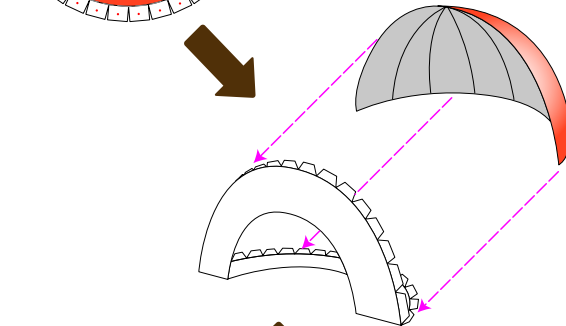
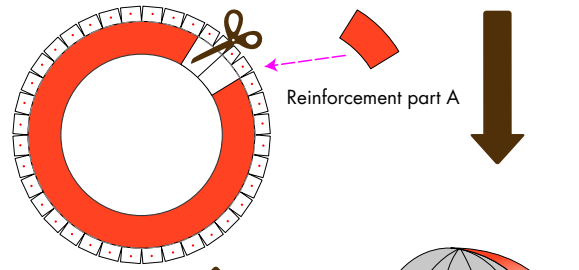
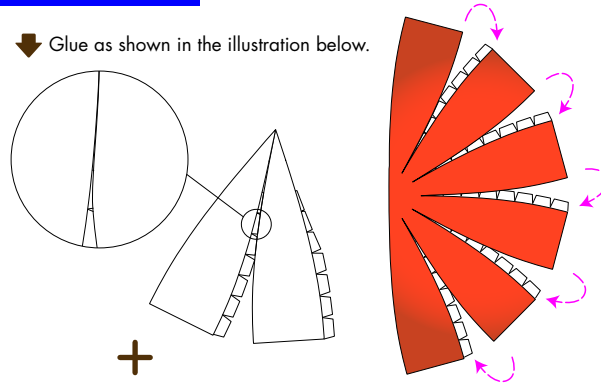
Chromosphere Photosphere Radiate layer

Core



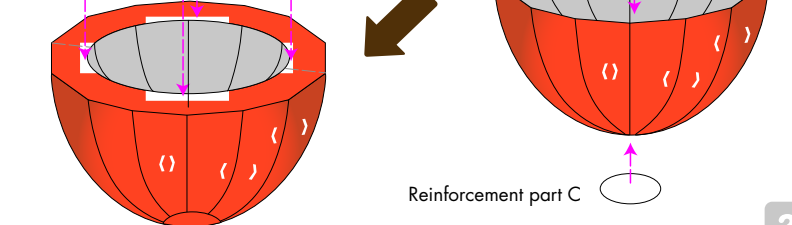
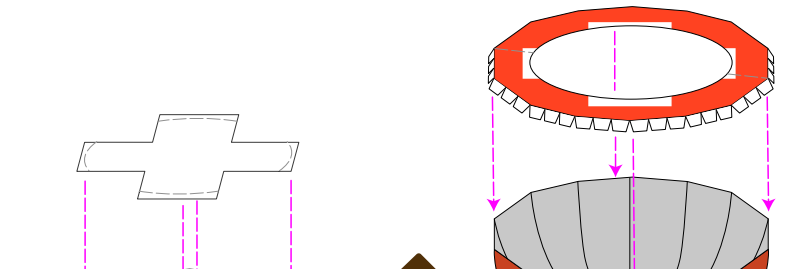
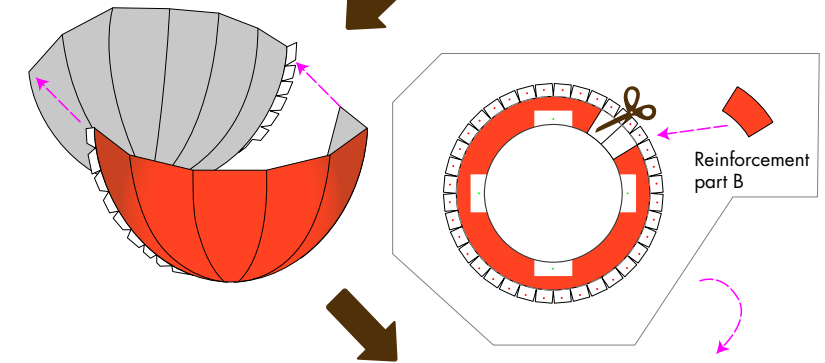
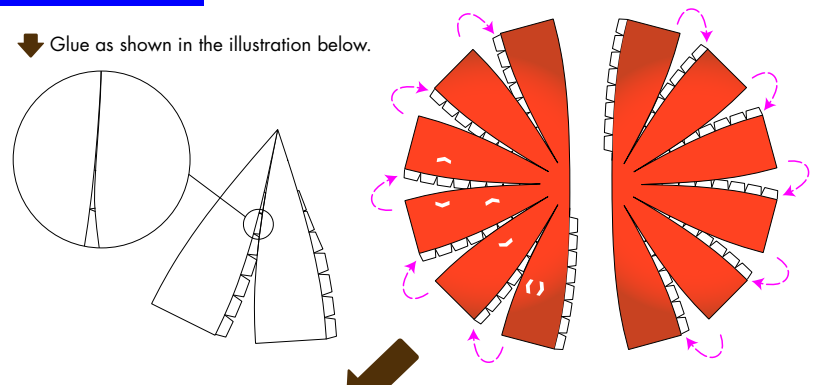
Upper part of the Sun

↓ Glue as shown in the illustration below.



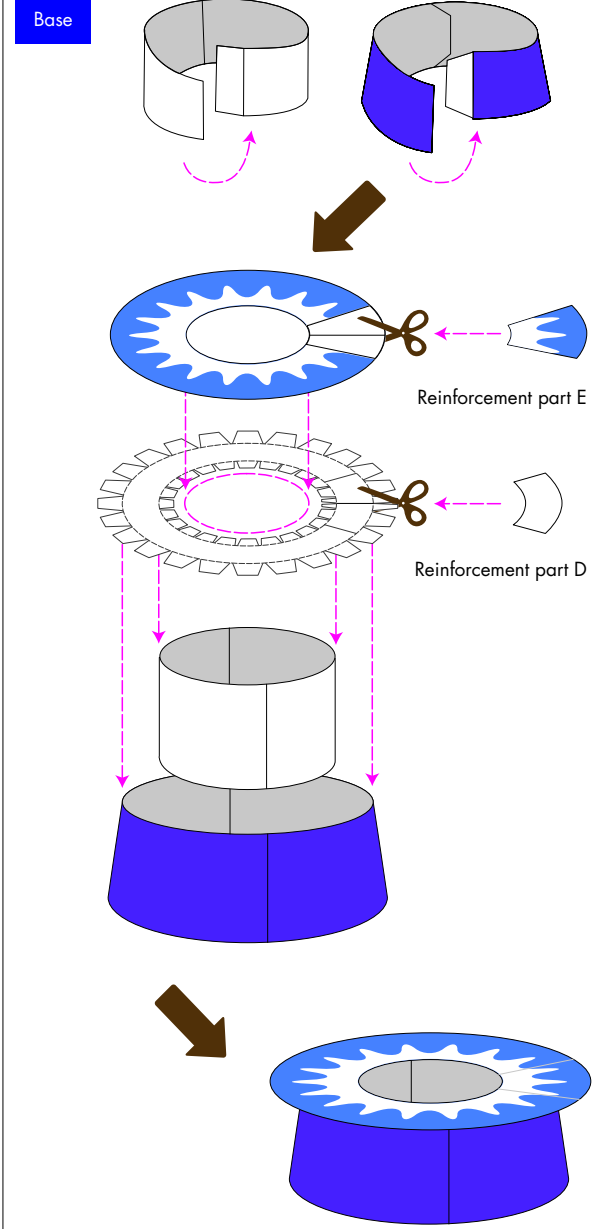
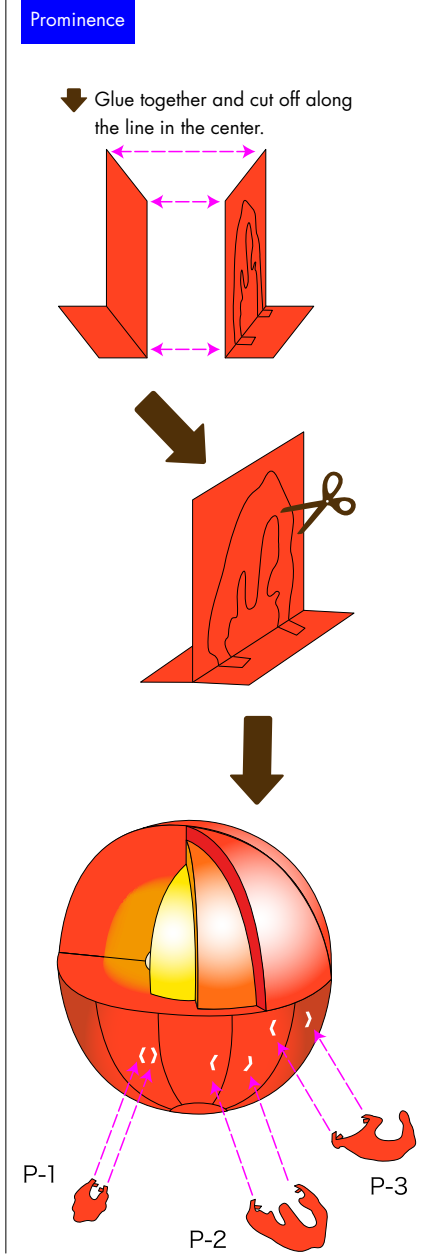
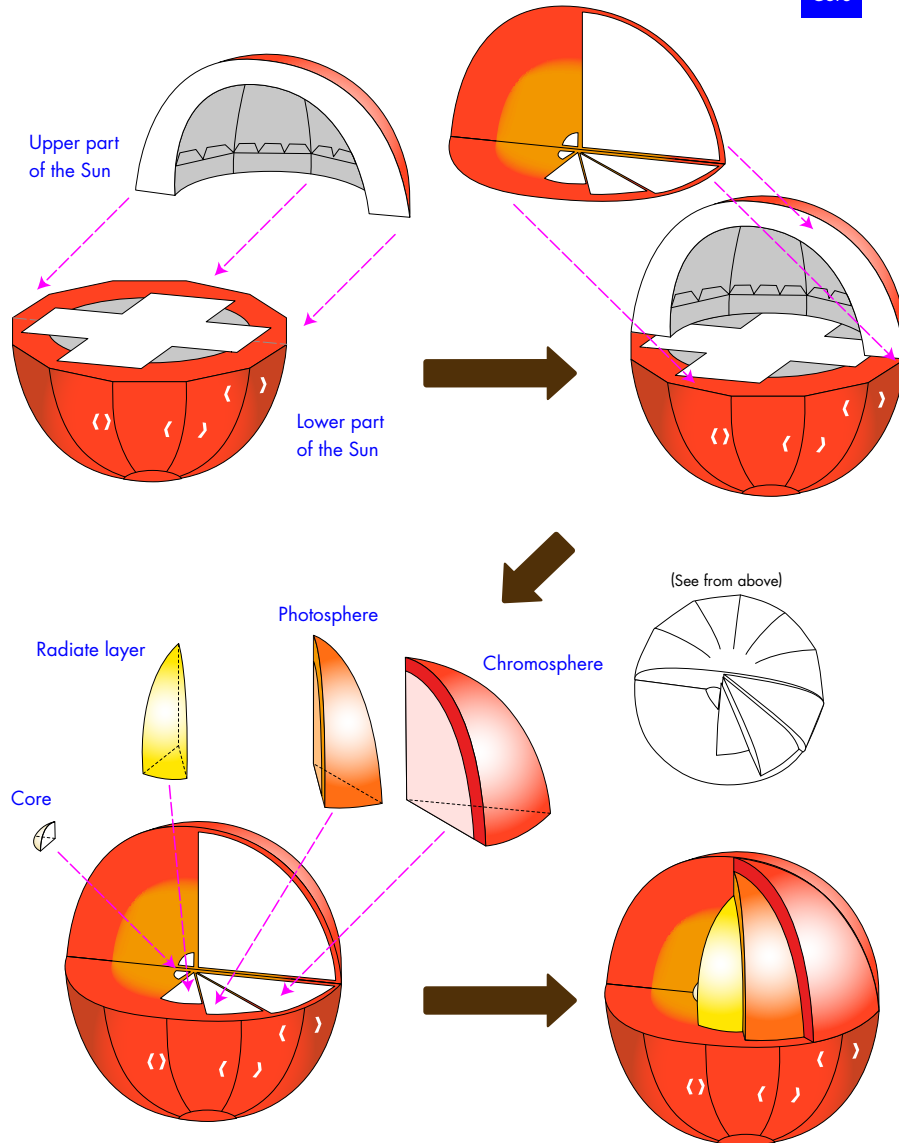
Lower part of the Sun

↓ Glue as shown in the illustration below.



Prepare materials. Cut out the parts and make mountain folds and valley folds as indicated.

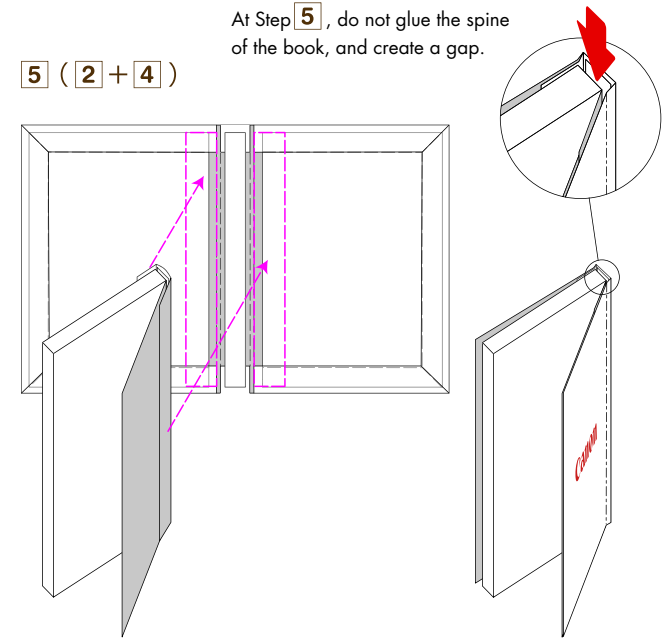
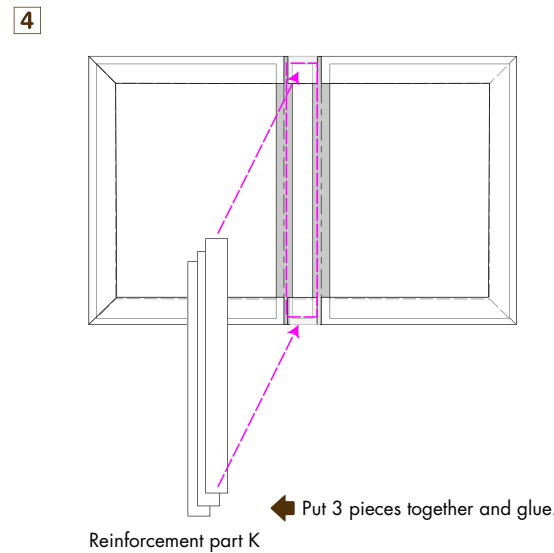
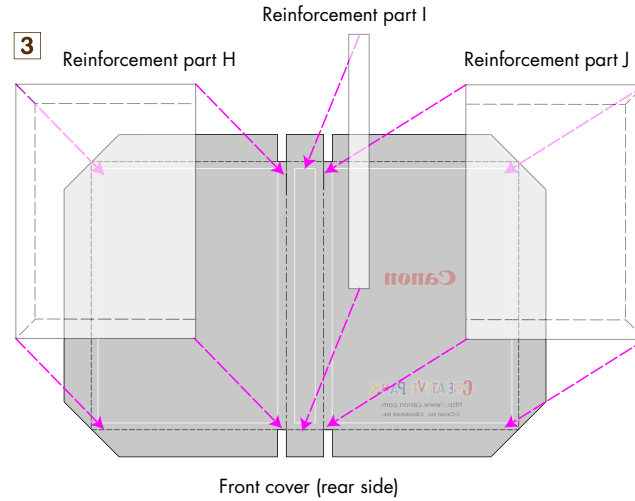
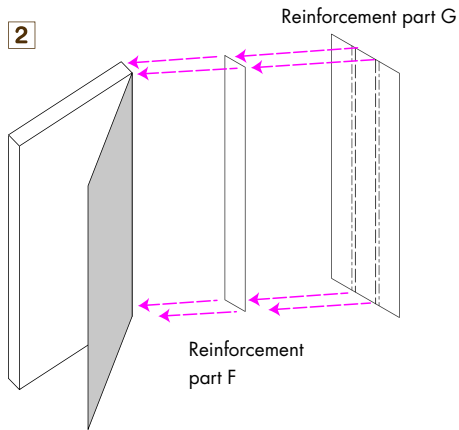
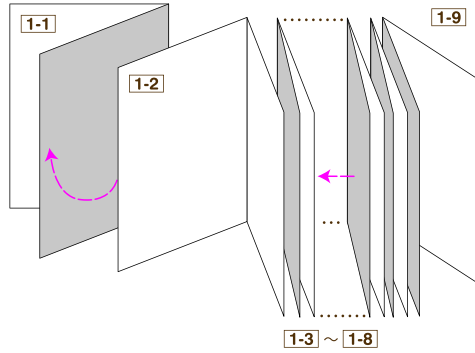
- Lower part of the Sun
- Upper part of the Sun
- Chromosphere
- Photosphere
- Radiate layer
- Core



Assemble in order, **1** - **6**. Prepare materials. Cut out the parts and make mountain folds and valley folds as indicated.

Miniature book

1 Glue the rear sides together in the order of the numbers given.



6 Case ↓ Glue the front and rear covers, and after you have completed, cut along the shaped line.

